

# COMPACT 3.0

24V BSP00006AC24



# Bergstrom

STANDARD PRODUCTS

A/C



### Performance

<b>cold</b> ❄️ <b>3.0kW</b>	+	<b>airflow</b> 🌀 <b>800 (m³/hr)</b>
-----------------------------------	---	---

### Electrical Data

engine switched OFF	amps <b>11-24A</b>	/	engine started ON	amps <b>25-38A</b>
---------------------	-----------------------	---	-------------------	-----------------------

### Applications



### Performance Input Data

temp <b>35°C</b>	humidity <b>50%</b>
---------------------	------------------------

Unit performance with the engine running is 3.0kW and with engine switched off the performance is limited to 1.4kW to protect the vehicle battery.

## Standalone A/C Electrical Unit

### Console, Front and Controls



Consoles adapted to every type of vehicles



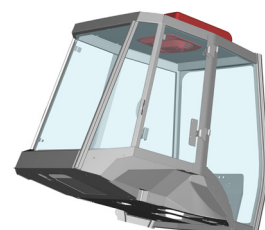
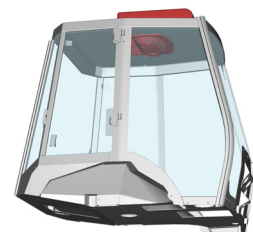
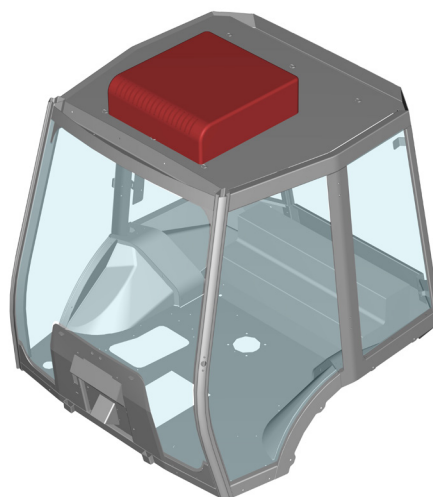
Display

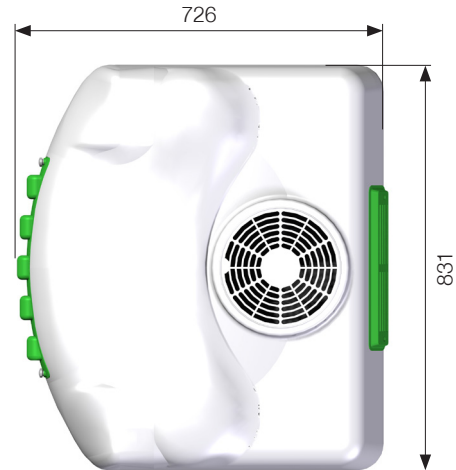


Control remote

### Position

Roof mount



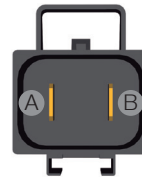
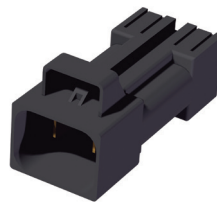
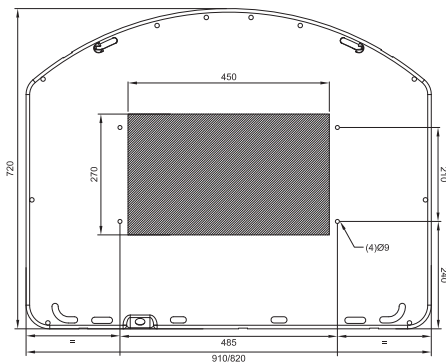


Weight



### Cutting template

For trucks



A - Blue wire (positive)  
B - Brown wire (negative)

### Cutting template

For forklifts

