

# INTEGRAL POWER

ATC FOR VEHICLES WITH HATCH

12V BSP00029AC12 / 24V BSP00029AC24



# Bergstrom

STANDARD PRODUCTS

A/C



### Performance

12V	cold ❄️ 6,820 BTU/hr	24V	cold ❄️ 10,920 BTU/hr	airflow 🌀 410 SCFM
-----	----------------------------	-----	-----------------------------	--------------------------

### Electrical Data

volts	amps	/	volts	amps
12V	32-65A		24V	30-55A

### Applications



### Performance Input Data

temperature	humidity
104°F	32%

Minimum alternator required: **24V** - 75 A/h - 28V / **12V** - 80A/h - 15V

## Standalone A/C Electrical Unit

### Console, Front and Controls



Consoles adapted to every type of vehicles



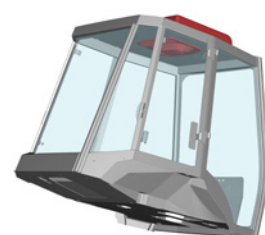
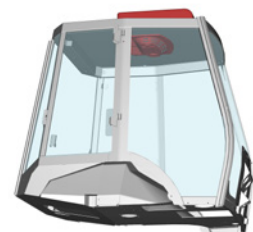
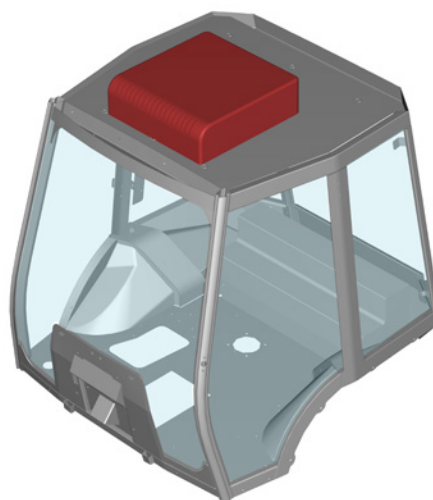
Display

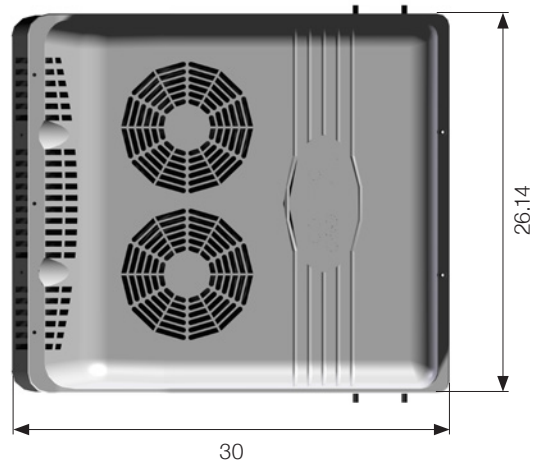


Control remote

### Position

Roof mount

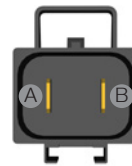
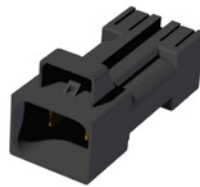
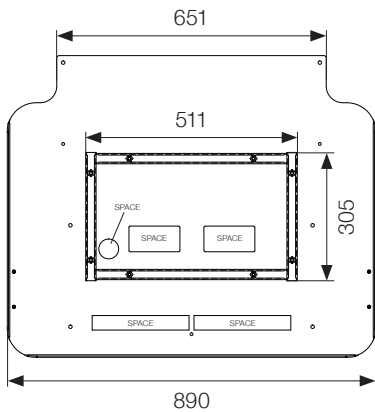




Weight



Coupling plate



A - Red wire (positive)  
B - Blue wire (negative)

Accessories



1 AWG Harness  
length: 250,39 inches  
BSP0001HARNES

