

INTEGRAL POWER

MANUAL CONTROL

12V BSP00028AC12 / 24V BSP00028AC24



Bergstrom

STANDARD PRODUCTS

A/C



Performance

12V	cold 2.0kW	24V	cold 3.2kW	airflow 700 (m ³ /hr)
-----	---------------	-----	---------------	-------------------------------------

Electrical Data

volts	amps	volts	amps
12V	32-65A	24V	30-55A

Applications



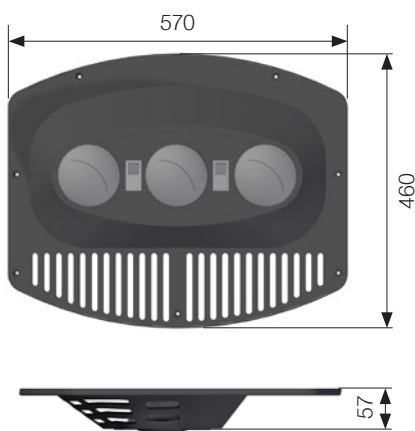
Performance Input Data

temp	humidity
40°C	32%

Minimum alternator required: **24V** - 75 A/h - 28V / **12V** - 80A/h - 15V

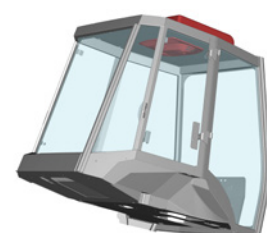
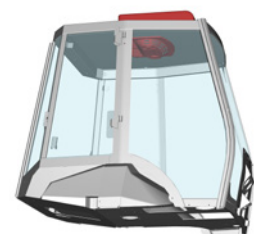
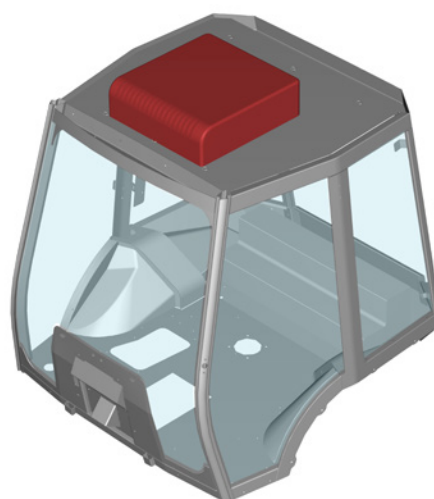
Standalone A/C Electrical Unit

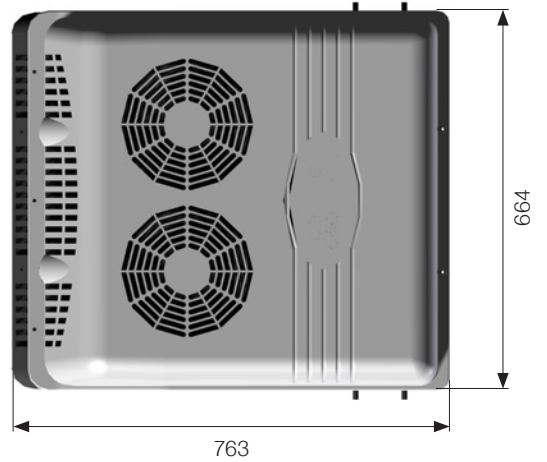
Front and controls



Position

Roof mount

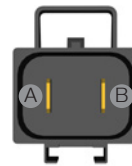
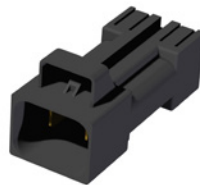
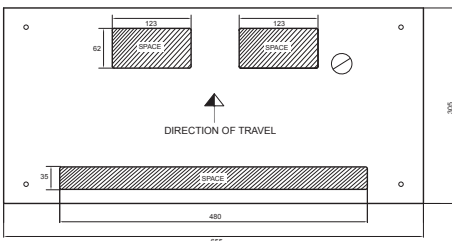




Weight



Cutting template



A - Red wire (positive)
B - Blue wire (negative)

Accessories



1 AWG Harness
length: 6.36 mts.
BSP00001HARNES

