

# INTEGRAL POWER

MANUAL CONTROL

12V BSP00028AC12 / 24V BSP00028AC24



# Bergstrom

STANDARD PRODUCTS

A/C



### Performance

|     |                            |     |                             |                          |
|-----|----------------------------|-----|-----------------------------|--------------------------|
| 12V | cold<br>❄️<br>6,820 BTU/hr | 24V | cold<br>❄️<br>10,920 BTU/hr | airflow<br>🌀<br>410 SCFM |
|-----|----------------------------|-----|-----------------------------|--------------------------|

### Electrical Data

|       |        |   |       |        |
|-------|--------|---|-------|--------|
| volts | amps   | / | volts | amps   |
| 12V   | 32-65A |   | 24V   | 30-55A |

### Applications



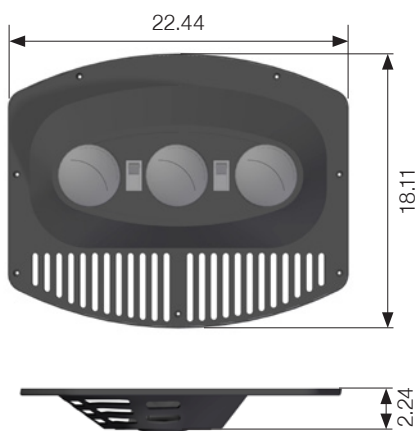
### Performance Input Data

|             |          |
|-------------|----------|
| temperature | humidity |
| 104°F       | 32%      |

Minimum alternator required: **24V** - 75 A/h - 28V / **12V** - 80A/h - 15V

## Standalone A/C Electrical Unit

### Front and controls



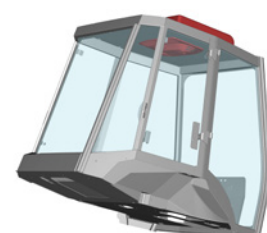
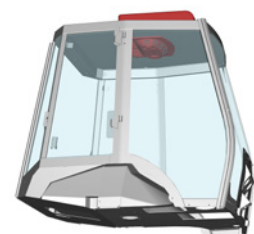
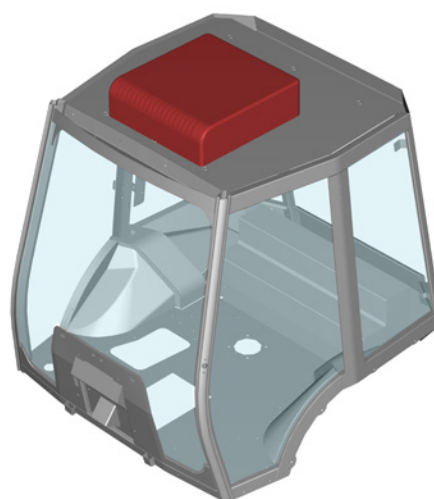
Switch A/C

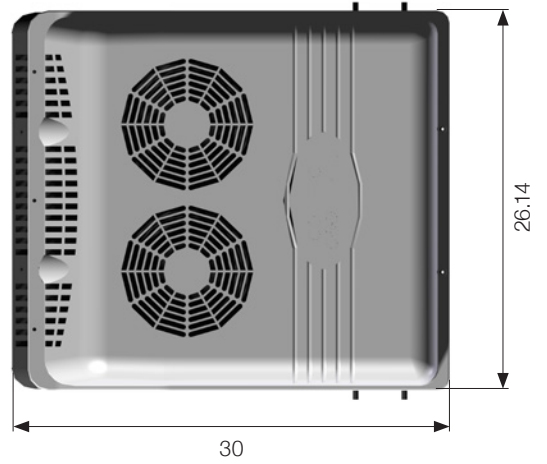


Switch Fan

### Position

Roof mount

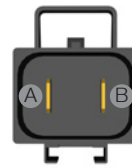
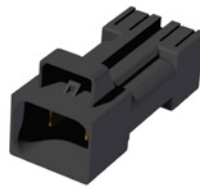
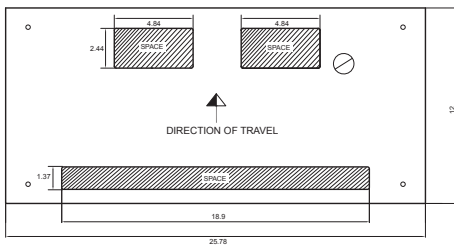




Weight



Cutting template



A - Red wire (positive)  
B - Blue wire (negative)

Accessories



1 AWG Harness  
length: 250,39 inches  
BSP0001HARNESS

