

KELVIN

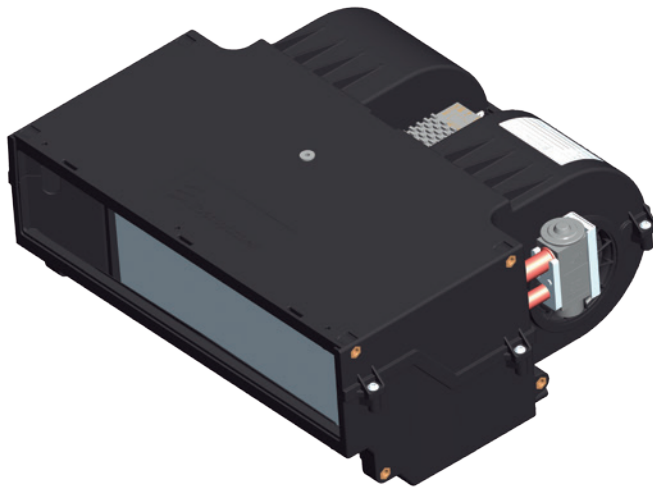
12V BSP00026AC12 / 24V BSP00026AC24



Bergstrom

STANDARD PRODUCTS

A/C



Performance

cold ❄️ 6.1kW	+	airflow 🌀 780 (m³/hr)
---------------------	---	-----------------------------

Electrical Data

volts 12V	amps 21.6A	/	volts 24V	amps 11A
--------------	---------------	---	--------------	-------------

Applications



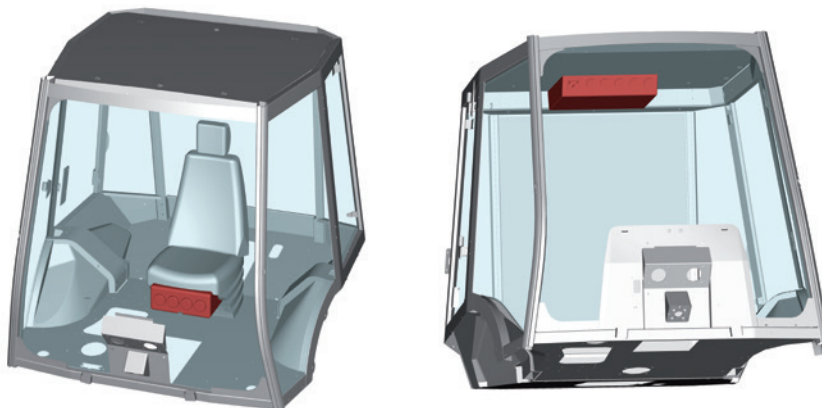
Performance Input Data

temp 38°C	humidity 40%
--------------	-----------------

Horizontal Evaporator Unit

Position

Multiple mount



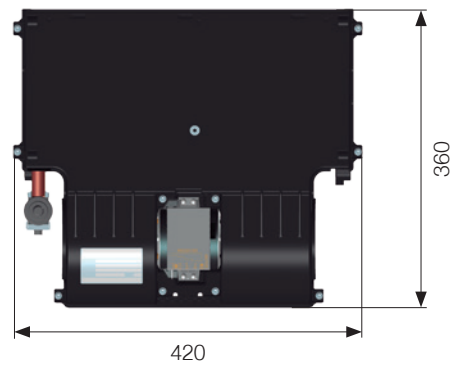
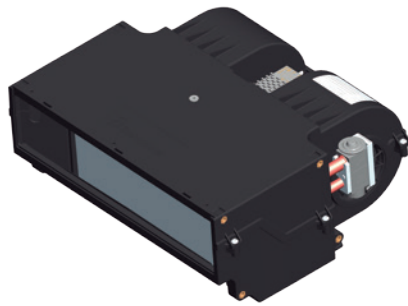
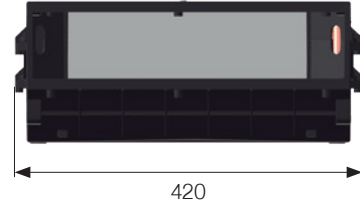
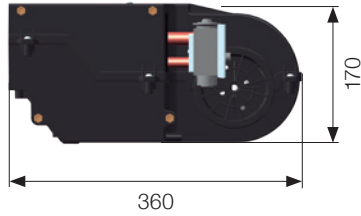


Bergstrom

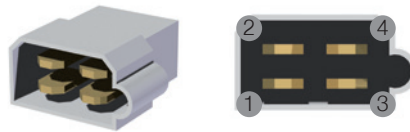
STANDARD PRODUCTS

KELVIN

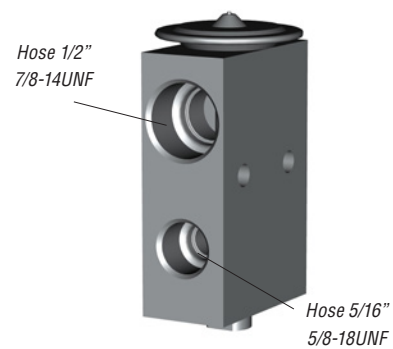
12V BSP00026AC12 / 24V BSP00026AC24



Weight



- 1 - Yellow wire (speed 1)
- 2 - Red wire (speed 2)
- 3 - Orange wire (speed 3)
- 4 - Black wire (ground)

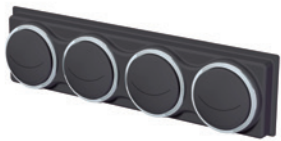


Expansion valve 2.0 TON

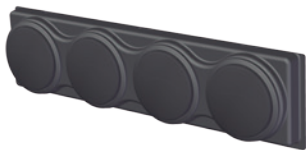
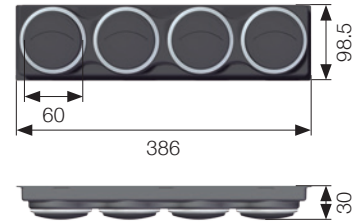
To ensure you have a complete kit to enable your chosen system to operate please check the system schematic data sheet which details the full list of components required.



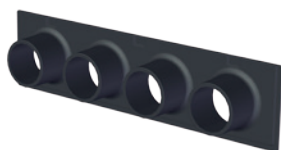
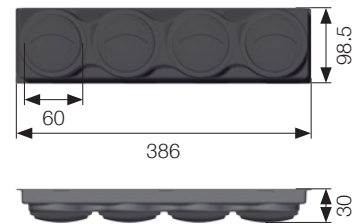
Outlet panels - Kelvin evaporators



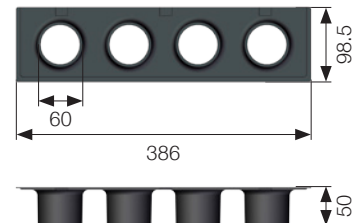
Kit - Outlet panel for Kelvin evaporator
Black vents / Frame - chrome
386x98.5x30 (4x Ø76.5)
Cod.: BSP00002PANELKIT



Kit - Outlet panel for Kelvin evaporator
Black vents / Frame - black
386x98.5x30 (4x Ø76.5)
Cod.: BSP00004PANELKIT



Kit - Outlet panel for Kelvin evaporator
Black
386x98x50 (4x Ø60)
Cod.: BSP00001PANELKIT

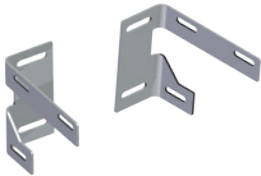




Bracket kits - Kelvin evaporators



Bracket Kit
Mount to the floor or roof
Cod.: BSP00003MOUNTKIT



Bracket Kit
Mount to the bulkhead or wall
Cod.: BSP00005MOUNTKIT

Drain hose kits - Kelvin evaporators



Kit - Drain hose
(1 side)
Cod.: BSP00001DRAINKIT



Kit - Drain hose
(2 side)
Cod.: BSP00002DRAINKIT

To ensure you have a complete kit to enable you chosen system to operate please check the system schematic data sheet which details the full list of components required.