

PASCAL

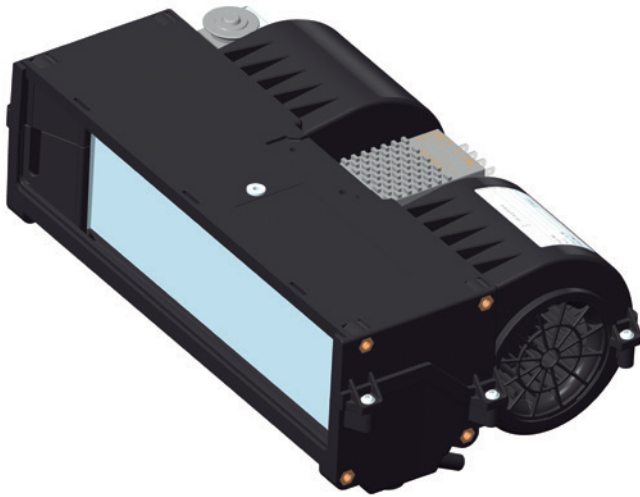
12V BSP00025AC12 / 24V BSP00025AC24



Bergstrom

STANDARD PRODUCTS

A/C



Performance

cold ❄️ 13,650 BTU/hr	+	airflow 🌀 260 SCFM
------------------------------------	---	---------------------------------

Electrical Data

volts	amps	/	volts	amps
12V	7.8A		24V	4.5A

Applications



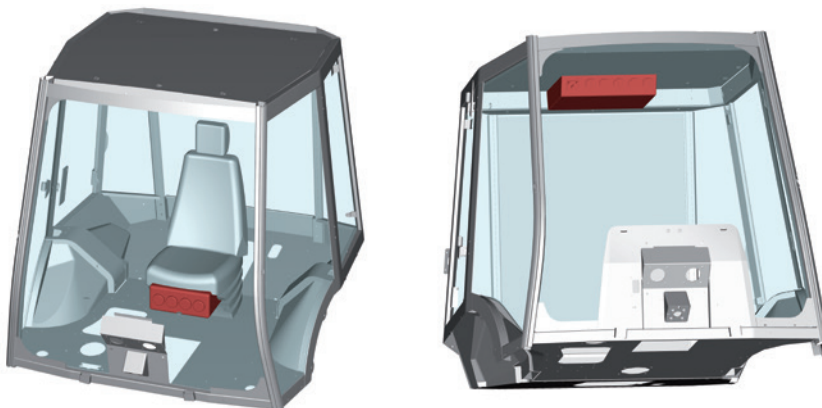
Performance Input Data

temperature 100°F	humidity 40%
-----------------------------	------------------------

Horizontal Evaporator Unit

Position

Multiple mount



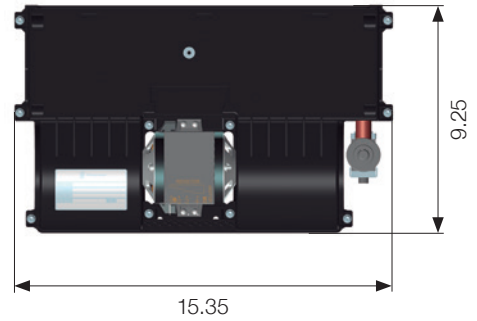
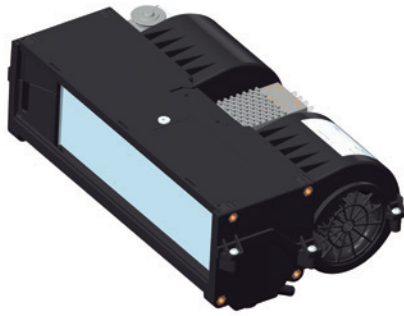
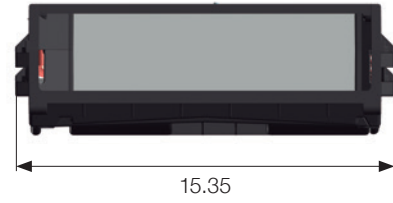
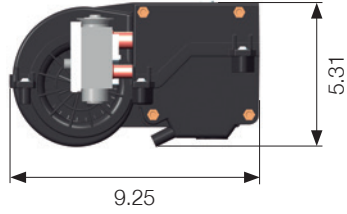


Bergstrom

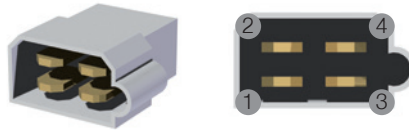
STANDARD PRODUCTS

PASCAL

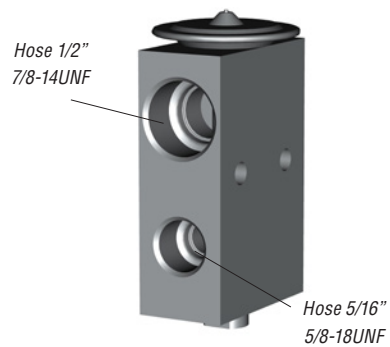
12V BSP00025AC12 / 24V BSP00025AC24



Weight



- 1 - Yellow wire (speed 1)
- 2 - Red wire (speed 2)
- 3 - Orange wire (speed 3)
- 4 - Black wire (ground)



Expansion valve 2.0 TON

To ensure you have a complete kit to enable you chosen system to operate please check the system schematic data sheet which details the full list of components required.

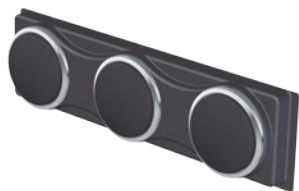
T // 1.800.499.6849

E // enquiries@bergstromstandardproducts.com

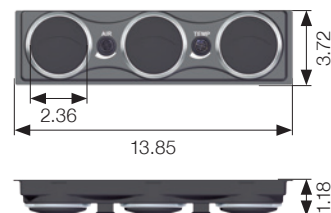
W // www.bergstromstandardproducts.com



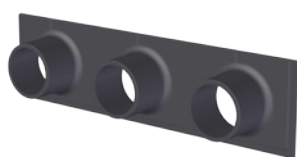
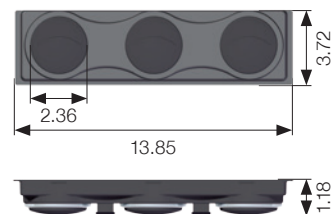
Outlet panels - Pascal evaporators



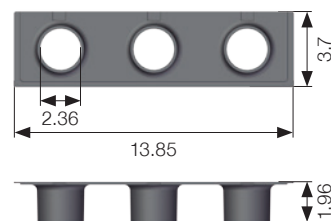
Kit - Outlet panel for Pascal evaporator with black vents
Frame - chrome
13.85x3.72x1.18 (3x Ø3.01)
Cod.: BSP00003PANELKIT



Kit - Outlet panel for Pascal evaporator with black vents
Frame - black
13.85x3.72x1.18 (3x Ø3.01)
Cod.: BSP00006PANELKIT



Kit - Outlet panel for Pascal evaporator
Black
13.85x3.70x1.96 (3x Ø2.36)
Cod.: BSP00005PANELKIT

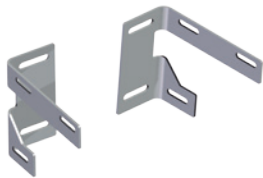




Bracket kits - Pascal evaporators



Bracket Kit
Mount to the floor or roof
Cod.: BSP00004MOUNTKIT



Bracket Kit
Mount to the bulkhead or wall
Cod.: BSP00006MOUNTKIT

Drain hose kits - Pascal evaporators



Kit - Drain hose
(1 side)
Cod.: BSP00001DRAINKIT



Kit - Drain hose
(2 side)
Cod.: BSP00002DRAINKIT

To ensure you have a complete kit to enable you chosen system to operate please check the system schematic data sheet which details the full list of components required.