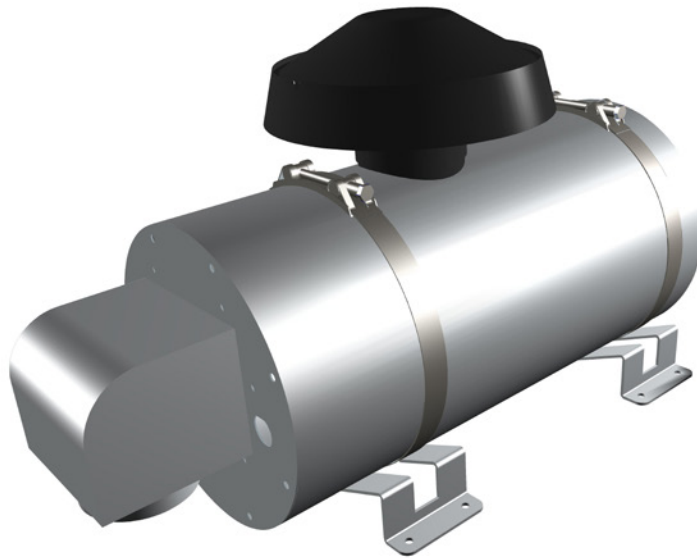


Pressurizer Tamandua

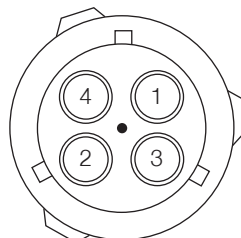


Cabin pressurization system with air pre-filter and activated carbon filter

Code	Type	Voltage	Features
BSP00001Press12	Tamandua with Carbon Filter 12V	12v	Air Pre-Filter & Activated Carbon Filter
BSP00001Press24	Tamandua with Carbon Filter 24V	24v	
BSP00002Press12	Tamandua with HEPA Filter 12V	12v	
BSP00002Press24	Tamandua with HEPA Filter 24V	24v	
BSP00003Press12	Tamandua with HEPA and Carbon Filter 12V	12v	
BSP00003Press24	Tamandua with HEPA and Carbon Filter 24V	24v	

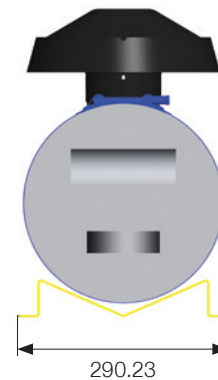
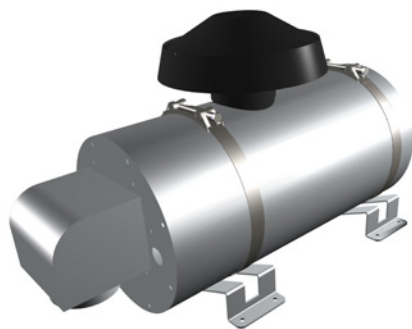
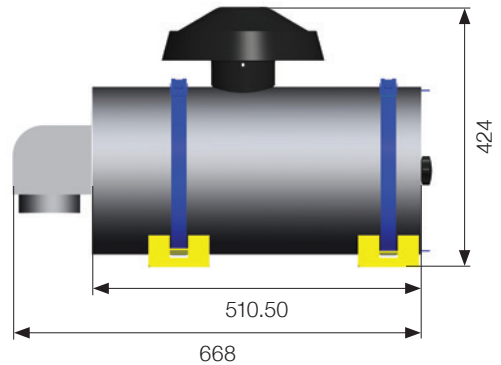
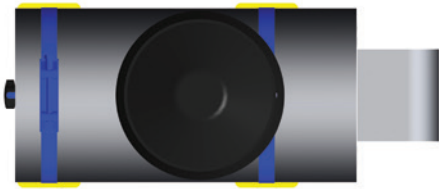
Socket connection group

- 1 - Black (sec.2.5mm)
- 2- Red (sec.2.5mm)
- 3- Orange (sec.2.5mm)
- 4- Yellow (sec.2.5mm)



SC6 N.1

P/f 4v 1-967325-1
4030610025
sr.2,5. Code A.



Weight



PK 16 (PREFILTRO)

Cabin Air Filtration: Synthetic nonwoven filter media, no-curing impregnation

Physical Properties:

Not cured grammage:	108 g/m ²	TM-CQ/004
Thickness:	635 µm	TM-CQ/005
Not cured burst strength:	250 kPa	TM-CQ/008
Not cured Gurley stiffness:	2.3 g	TM-CQ/012
Pressure drop at 240 l/min/100cm ² :	5.5 mmWC	TM-CQ/009
Air Permeability 2 mBar/20cm ² :	1542 l/m ² sec	--
Bubble test - 1BP:	85mmWC	TM-CQ/013
Bubble test - FAOP:	112 mmWC	TM-CQ/013



PK 15 Carbon Filter

Material composition:

Reticulated polyurethane foam coated with activated granular carbon.

Weight for unit area (g/m ²) according to DIN EN 12127:	2.000±200
Activated carbon content (g/m ²):	1.400±200
Thickness (mm) LG 050:	11.0±0.5
Differential pressure (Pa) 0,8m/s:	<30
Butane absorption (mg/cm ²) (80ppm n-Butan,V=0,17m/s 23°C, 50%humid)	



Template for fixing

